

Sheet

EP-100-C

Industrial Wood Stove with Centrifugal Fan



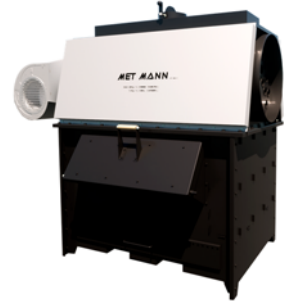
Technical Data

| | DESCRIPTION | UNITS | DATA |
|-------------------|---------------------------|------------------|----------------|
| DATA TECHNICAL | Nominal power | Kw | 100,00 |
| | Thermal performance | % | 80 |
| | Usable power | Kw | 80,00 |
| | Air Flow | m3/h | 3.400 |
| | Static Pressure Available | Pa | 100 |
| | Thermal Jump | °C | 35 |
| | Noise level | dB(A) 3m | 64 |
| | Fan Type | - | CENTRIFUGAL |
| | Engine power | Kw | 0,55 |
| | Electrical voltage | - | 230-I-50Hz |
| FUELS | Leña (4,60 kW/kg) | Consumption kg/h | 21,73 |
| | Maximum Expected Load | Kg | 21,73 |
| DIMENSIONS | Overall Dimensions | mm | Consult map |
| | Smoke outlet | mm | Ø200 |
| | Air Supply Section | mm | Ø530 |
| | Loading port | mm | 835x280 |
| | Weight | Kg | 800 |
| CERTIFICATES | | | EC - 2016/2281 |

Sheet

EP-100-C

Industrial Wood Stove with Centrifugal Fan



Construction details

The EP-100-C fan wood stoves are prepared to be able to work with different types of wood as well as charcoal. Its construction characteristics are:

- Combustion hearth with refractory bricks
- Stainless steel combustion grills
- Large capacity ash drawer
- Access door to the combustion hearth
- Side panel with air chamber for heat convection
- Draft regulator applied to flue gas outlet
- Reversible centrifugal fan on both sides
- Protective grilles to prevent contact with the engine propeller
- Two-body construction for easy cleaning and maintenance
- Thermostat kit for starting and cooling fan depending on the detected temperature (optional)

Air Diffusion

Equipment normally dissipates heat from the opposite side of the fan, but there is the possibility of applying a duct network or with:

- 90° bend to direct air through the front or back
- Special ducts (curves, trousers, hoppers, etc...)

Protective cage

For places with an influx of people, we recommend the use of our protective cages that largely avoid touching the parts most exposed to heat

Special Manufacturing

Our status as manufacturers allows us to adapt to the needs of each customer and we can supply the equipment with:

- Custom Air Flows and Pressures
- All-stainless steel finish

Certificates

Our wood stoves with EP fan have the following certificates

- CE Certificate
- Regulation 2016/2281 ecodesign

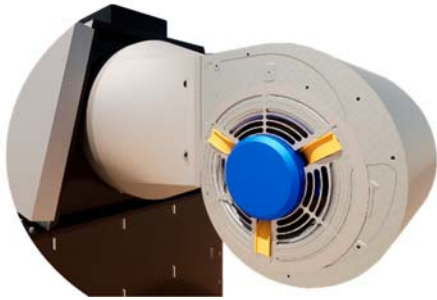
Sheet

EP-100-C

Industrial Wood Stove with Centrifugal Fan



Construction details



Centrifugal fan unit



Release regulator



Heat Exchanger



Ashes collection box



Combustion hearth with refractory bricks



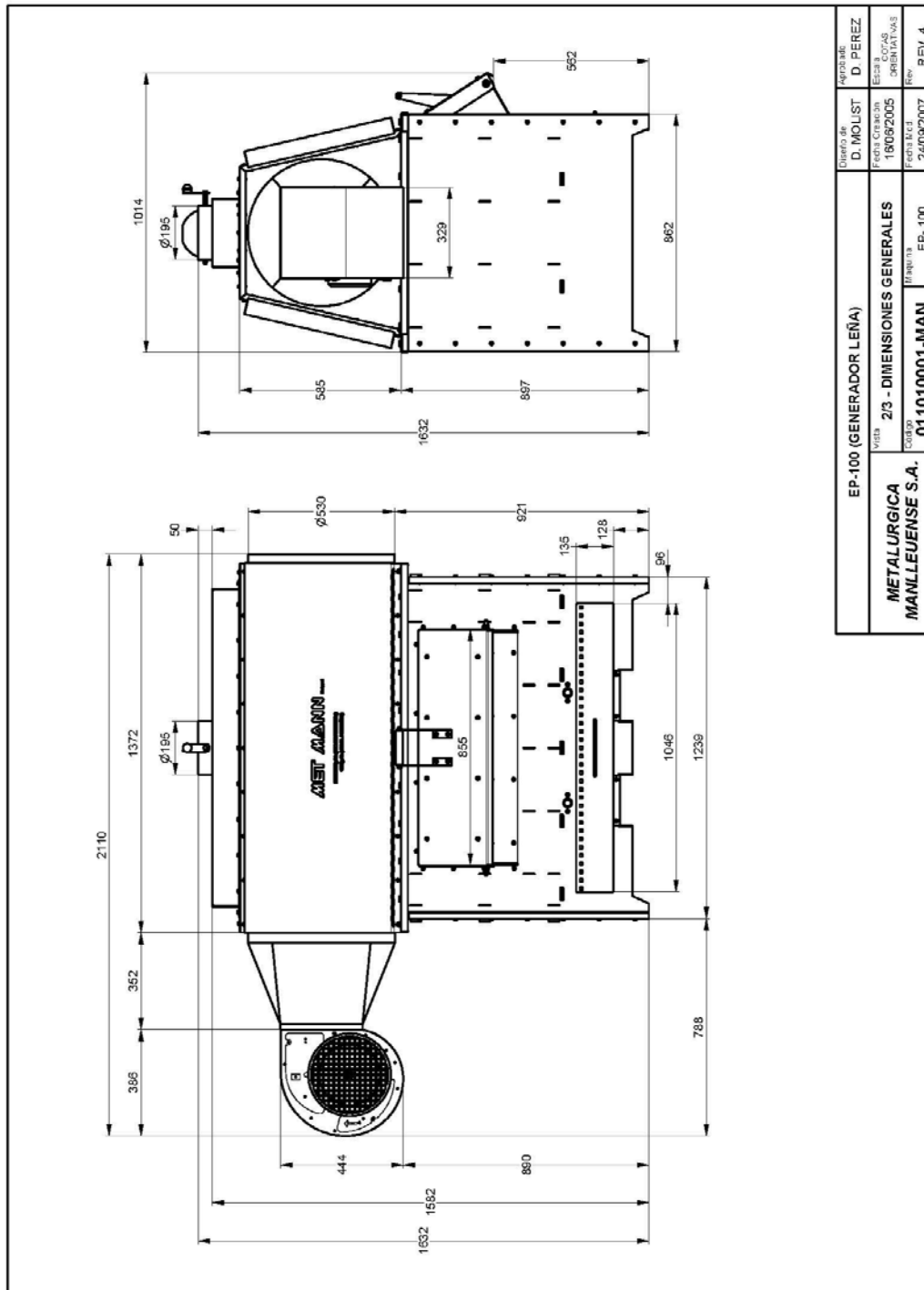
Sheet

EP-100-C

Industrial Wood Stove with Centrifugal Fan



Overall Dimensions



| | | | |
|------------------------------|--|-------------------------|--|
| VISTA | | EP-100 (GENERADOR LEÑA) | |
| METALURGICA MANLLEUENSE S.A. | | DISEÑO DE | |
| MANLLEUENSE S.A. | | D. MOLIUST | |
| CORPOR | | FECHA | |
| 011010001-MAN | | 18/06/2005 | |
| EP-100 | | REVISIÓN | |
| REV. 4 | | FECHA | |
| REV. 4 | | 24/08/2007 | |



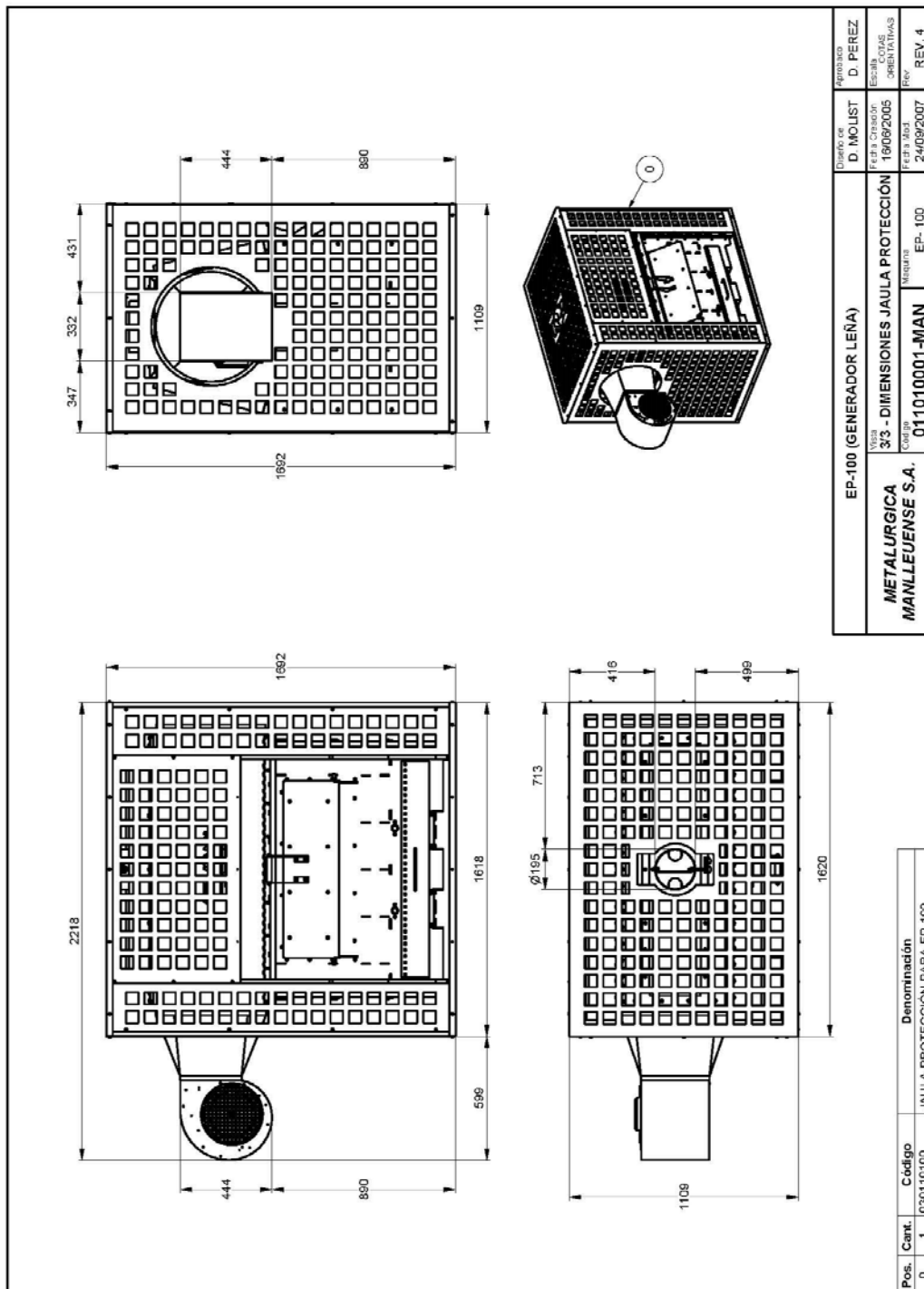
Sheet

EP-100-C

Industrial Wood Stove with Centrifugal Fan



Overall dimensions (with protective cage)



Sheet

EP-100-C

Industrial Wood Stove with Centrifugal Fan



Example of facilities

